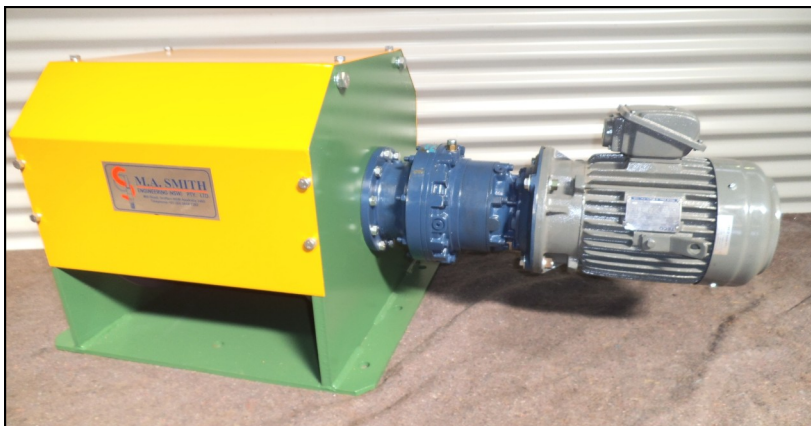


M. A. SMITH

ENGINEERING (NSW) PTY LTD

ABN 69 065 656 251

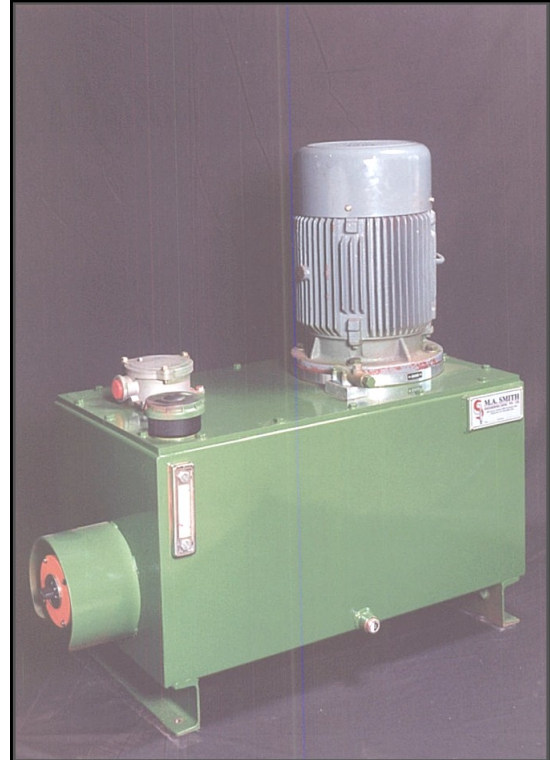
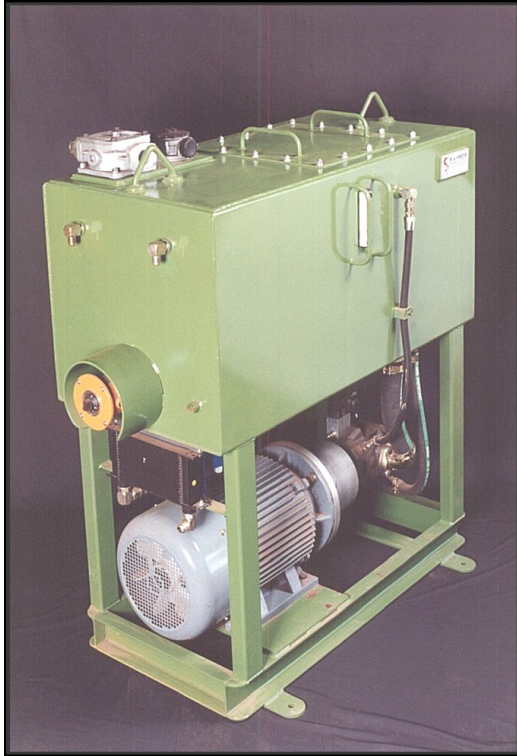
HYDRAULIC SYSTEMS, **WINCHES & FANS**



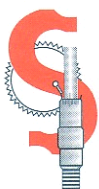
8 Mill Road, KOOLKHAN NSW 2460
P O BOX 901, GRAFTON NSW 2460
Phone: (02) 6644 7262 Fax: (02) 6644 7899

sales@masmith.com.au

HYDRAULIC POWER UNITS



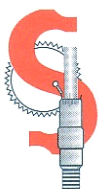
- M.A. Smith Engineering (NSW) Pty Ltd have manufactured a range of Hydraulic Power Units, both electric and petrol driven for a range of industrial and mobile applications.
- Our power units can be manufactured from a range of stand tanks & components, or custom designed to suit individual applications



M. A. SMITH
ENGINEERING (NSW) PTY LTD

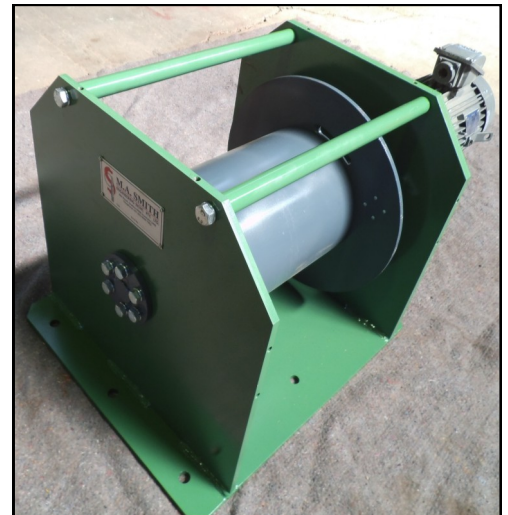
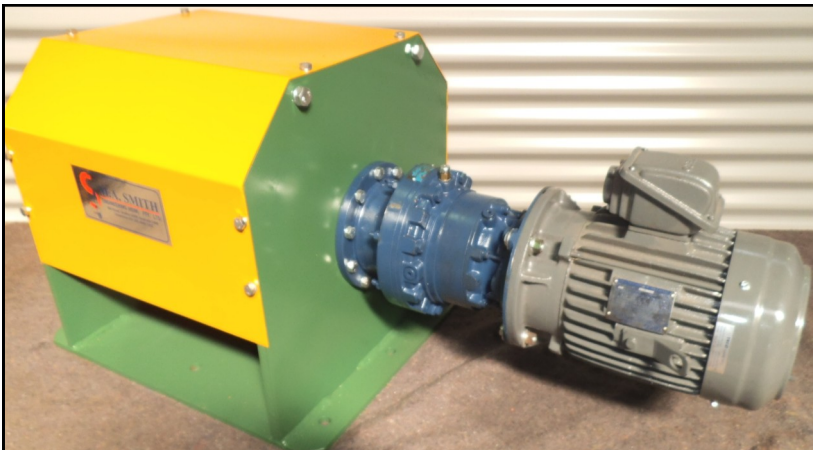
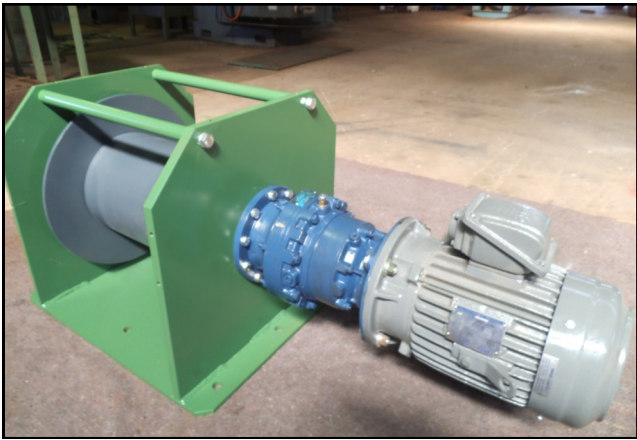
MODULAR UNITS

- Modular hydraulic systems as shown below are available in 80L, 160L, 250L and 400L. Tanks are ex-stock with fixed displacement or pressure compensating pumps.
- Tank top manifold is available in both c-top 3 & 5.
- Valving, cylinders, motors and associated products are also available at competitive prices.



**M. A. SMITH
ENGINEERING (NSW) PTY LTD**

WINCHES



- Our winch systems are custom built for individual applications, such as mooring, carriage drives, recovery & hoisting.
- Options available are:
 - Hydraulic Drive
 - Electric Drive
 - Electric Brake
 - Variable Speed Control
 - Torque Control
 - Position Control



**M. A. SMITH
ENGINEERING (NSW) PTY LTD**

SAWDUST EXTRACTION FANS



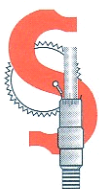
- Our Modular Extraction Fans are available in sizes to suit customer requirements eg. 200mm dia, 250mm dia, 350mm dia, 400mm dia.
- The units can be assembled in both left and right hand.
- The case is symmetrical allowing it to be rotated to customer requirements.
- All impellers are fabricated from bisalloy 400.



M. A. SMITH
ENGINEERING (NSW) PTY LTD

COMPACT FAN UNITS

- Our compact range of extraction fans are both durable and cost effective to manufacturers.
- Available in a range of sizes typically 150 and 200 dia.
- The units are manufactured to order with impeller direct mounted on the electric motor.



M. A. SMITH
ENGINEERING (NSW) PTY LTD